

[Welcome to TEC Connect](#)[View this email in your browser](#)

Dear Friend,

Welcome to *TEC Connects*. Your monthly newsletter! You will find that it is filled with educational information, helpful hints and tips, events, news and even some product offerings. Our focus is *connection* and we want to bring value to your passion for Christian Education so please, please share your feedback and suggestions with us. Perhaps you have a great event, photo, story or quote you would like to share with us... please do send them in. We also love to hear your questions and comments, so stay in touch.

We hope you enjoy this month's *Connects*!

[info@theexcellencecentre.org](mailto:info@theexcellencecentre.org)

---

## WHAT IS YOUR MINDFRAME?

# by Tina Lamont

Visible Learning is about making learning *visible*. John Hattie has developed the notion of Visible Learning to represent the most powerful influences on teaching and learning in our classrooms. By powerful, he means those strategies that are effective for student learning.

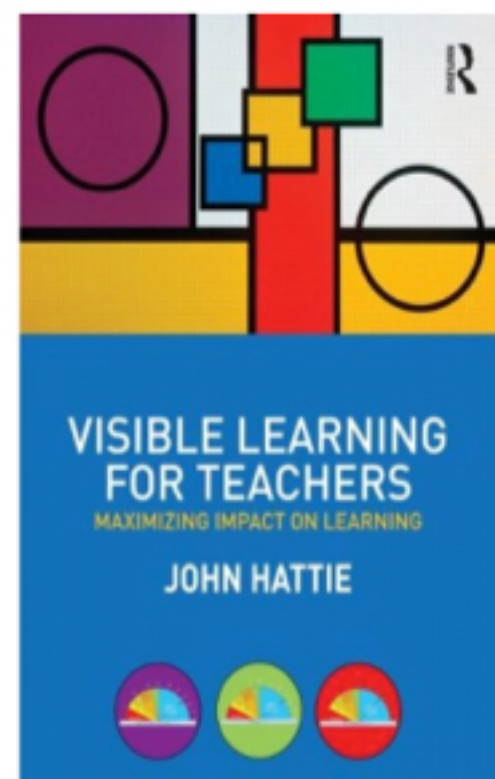
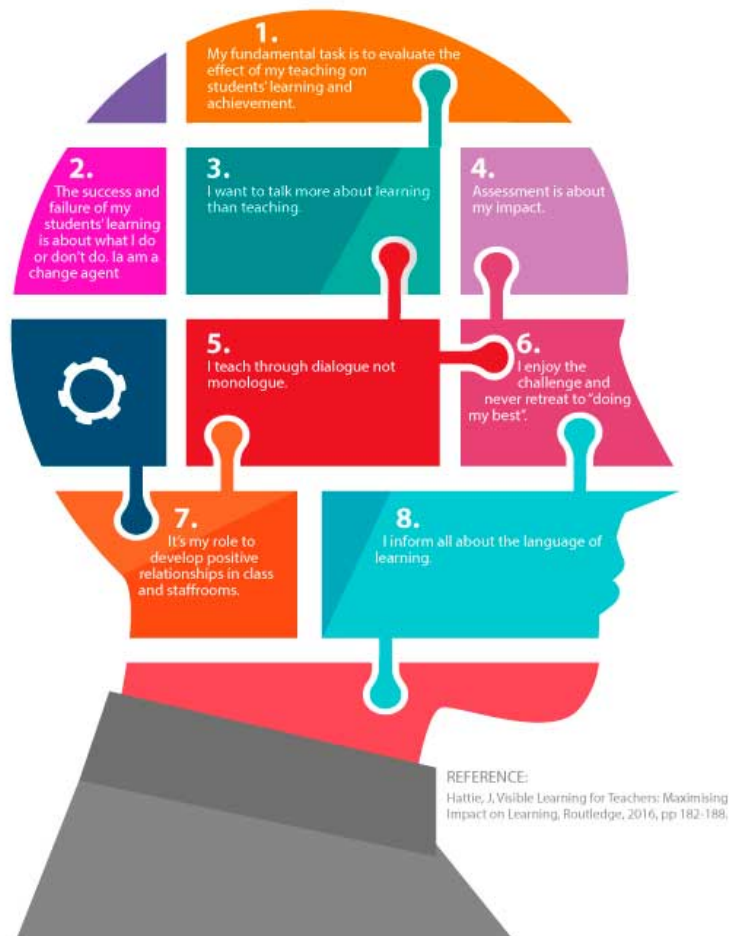


This understanding of the most powerful influences is based on evidence from over 800 meta-analyses of 50,000 research articles, 150 influences, and over 240 million students.

Visible Learning does not mean ticking off the list of the top 10 of the most powerful influences. It is about having a set of **mindframes** (Figure 1) to ensure that learning is maximised. It matters what teachers do – but what matters most is having an appropriate mindframe relating to the impact of what they do.

If you want to know more you could visit, [www.cognitioneducation.com](http://www.cognitioneducation.com).

## HATTIE'S 8 MIND FRAMES



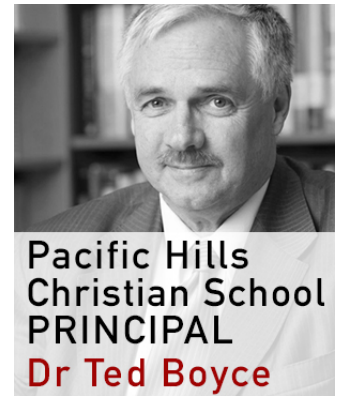
Click the image above to download Hattie's 8 Mind Frames.

# PARENTS

## by Dr Ted Boyce

*Start children off on the way they should go, and even when they are old they will not turn from it.*  
(Proverbs 22: 6, NIV)

We recently had the opportunity of sitting down with Executive Principal, Dr Ted Boyce from The Pacific Group of Schools to ask him what the role of Parents is in Christian Education.



# EFFECTIVE TEACHING

## by Helen Blanch

Helen Blanch is the Principal of Kingdom Culture Christian School in Arncliffe in Sydney. Helen is passionate about '*teaching Christianly*'. We recently spent some time with Helen asking her:

Why it is important for teachers to have training in Christian Education?

What types of training for teachers would she recommend?



## WHAT'S HAPPENING

MAY

JUNE

JULY

AUG

SEPT

OCT

NOV

## DATES FOR YOUR DIARY

**22 - 24 May**

Christian Schools National Policy  
Forum, Canberra

**15 – 16 June**

TEC Executive Principals Gathering,  
Sydney

**23 & 24 June**

Mentoring for the Mentors Retreat  
with Peter Hudson (MET), Gold  
Coast

**3 – 7 July**

Hillsong Conference

**11 - 12 August**

Aspiring Leaders Retreat, Sydney

**17 - 19 August**

Australian Christian Higher

Education Alliance (ACHEA)  
Conference, Sydney

**23 August**

Schools Learning Together Seminar:  
Dr David Smith, Sydney

**25 - 26 August**

Equipping Leaders Retreat, Sydney

**25 October**

Schools Learning Together Seminar:  
Dr Don Roy, Sydney

**17 - 18 November**

Mentor the Principals, Sydney

There is much happening in the life of TEC so keep a watch on our website

[www.theexcellencecentre.org](http://www.theexcellencecentre.org)

## CONNECT WITH TEC



**Blog posts by Dr  
Ted Boyce:**

[God's Revealed plan  
in Human  
Relationships](#)



We're building a global  
community and  
sharing the Gospel  
through Social Media.

- Motivation



[How to Exercise  
authority Wisely](#)

[Being Careful in What  
We Say](#)

[Three Great Surprises](#)

[The Need For Self-  
Acceptance](#)

- Monday
- Verse of the Day
  - News & Info
  - Quotes
  - Upcoming Events
  - Much More

Have you  
[Liked TEC on  
Facebook](#)



[Go to TEC'S  
online gallery](#)

That's all for now, read more at [www.theexcellencecentre.org](http://www.theexcellencecentre.org)

[Forward this email to a friend](#)



Copyright © 2017 The Excellence Centre, All rights reserved.



+61 2 9651 0712



[email us](#)

**Want to change how you receive these emails?**

You can [update your preferences](#) *or*  
if you do not wish to receive these  
reflections from Dr Ted Boyce or his team please  
[unsubscribe from this list](#)

MailChimp.